

ELEMENTA

shape your space

ISTRUZIONI DI MONTAGGIO
ASSEMBLY INSTRUCTIONS

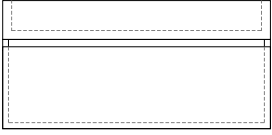
ISTRUZIONI DI MONTAGGIO INSTALLATION INSTRUCTIONS

KLEOS/SYRENE

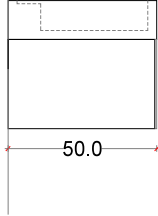
DIM. L x 50 x H cm

KLEOS

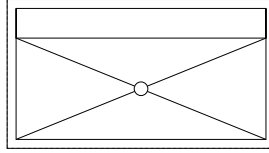
FRONT



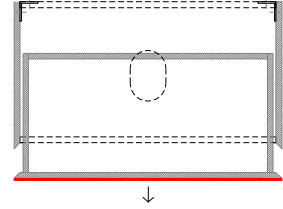
SIDE



TOP WASHBASIN

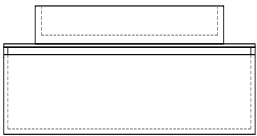


PLAN VANITY

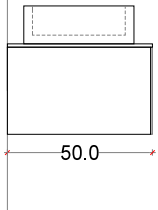


SYRENE

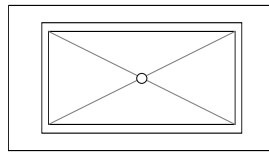
FRONT



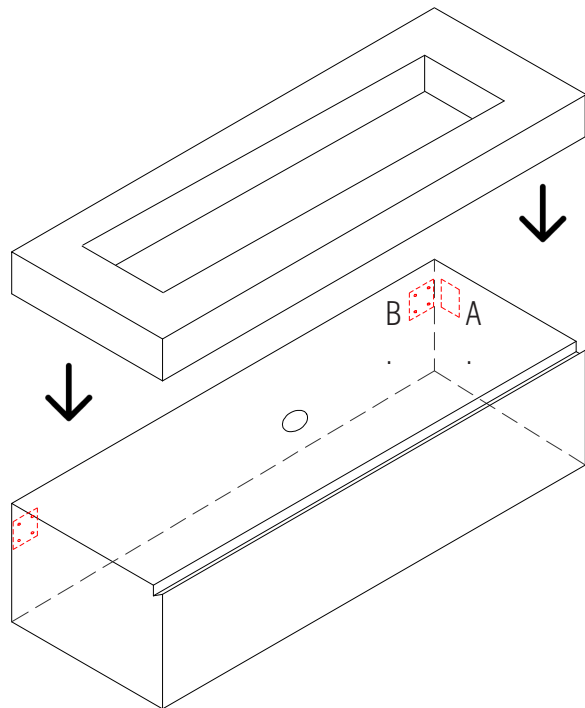
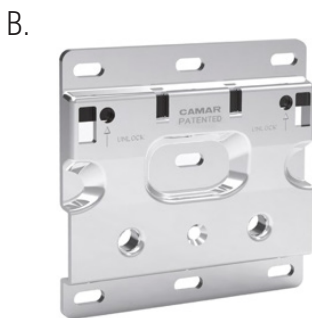
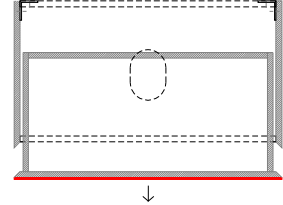
SIDE



TOP WASHBASIN



PLAN VANITY



NOTE

Fissaggio a parete. Lavabo fissato superiormente con silicone. Agganci (A) e (B) inclusi.
Wall mounting. Washbasin secured from above with silicone. Brackets (A) and (B) included.

COSA OCCORRE: Matita - Metro a Nastro - Livella - Trapano - Avvitatore - Martello - Cacciavite - Silicone
REQUIRED TOOLS: Pencil - Measuring Tape - Level - Drill - Screwdriver - Hammer - Screwdriver - Silicone

ISTRUZIONI DI MONTAGGIO

INSTALLATION INSTRUCTIONS

0_Fase Preliminare

Verificare la presenza di una parete di muratura dietro al cartongesso e verificare distanza per dimensionare la lunghezza della staffa.

In alternativa posizionare un rinforzo in legno all'interno del cartongesso in corrispondenza delle staffe. Controllare il tipo e le condizioni della parete su cui verrà montata la mensola, assicurandosi che non vi sia alcun cablaggio e/ o impianto idraulico all'interno esso. Segnare l'altezza di installazione della mensola.

0_Preliminary Phase

Check for the presence of a masonry wall behind the drywall and measure the distance to determine the appropriate bracket length. Alternatively, install a wooden reinforcement inside the drywall at the bracket positions. Inspect the type and condition of the wall where the shelf will be mounted, ensuring that no wiring and/or plumbing systems are present inside. Mark the installation height of the shelf.

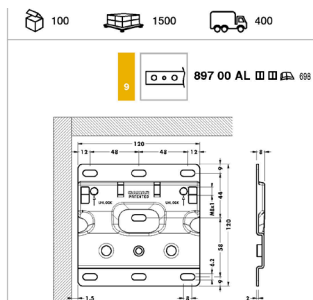
1_Preparazione del fissaggio

Posizionare le piastre di supporto (B) contro la parete e segnare le posizioni per i fori di ancoraggio delle viti.

1_Fixing Preparation

Position the support plates (B) against the wall and mark the positions for the screw anchor holes.

B.



2_Inserimento tasselli

Praticare un foro nella parete per ogni tassello, con lo stesso diametro dei tasselli. Avvitare la vite in parte nel tassello. Inserire i tasselli (con le viti all'interno) nella parete e poi martellare delicatamente fino a renderli a filo con la parete. Stringere la vite completamente e poi svitarlo.

2_Inserting Wall Anchors

Drill a hole in the wall for each anchor, matching the anchor diameter. Partially screw the screw into the anchor. Insert the anchors (with the screws inside) into the wall, then gently hammer them until they are flush with the surface. Fully tighten the screw, then unscrew it.

3_Montaggio Vanity

Agganciare le staffe di sospensione montate sul lato del mobile (A) alle piastre di supporto (B) posizionate sulla parete.

3_Vanity Installation

Hook the suspension brackets mounted on the side of the cabinet (A) onto the support plates (B) positioned on the wall.



4_Fissare il top / lavabo

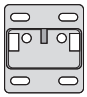




Posizionare la parte superiore sopra il mobile e, utilizzando un livello a bolla, verificare che non ci siano aree inclinate.

Applicare silicone strutturale o colla per superfici porose/non porose lungo tutta la lunghezza del top. Montare il top e applicare pressione. Attendere 24 ore prima di aggiungere altro peso. Riempire con silicone i giunti tra la parte superiore e la parete (min. 1 mm).

4_Securing the Countertop/Washbasin

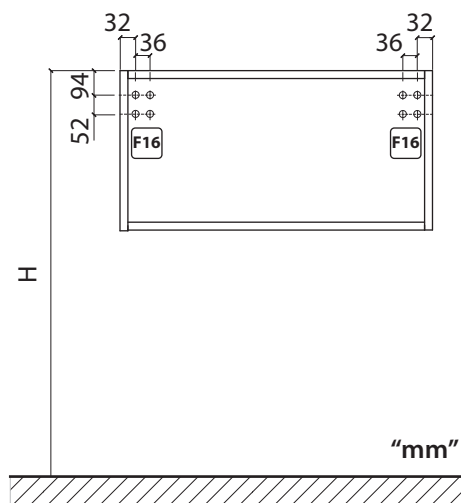
Place the countertop on top of the cabinet and use a spirit level to check for any uneven areas. Apply structural silicone or adhesive suitable for porous/non-porous surfaces along the entire length of the countertop. Position the countertop and apply pressure.

Wait 24 hours before adding any additional weight. Seal the joints between the countertop and the wall with silicone (minimum 1 mm).

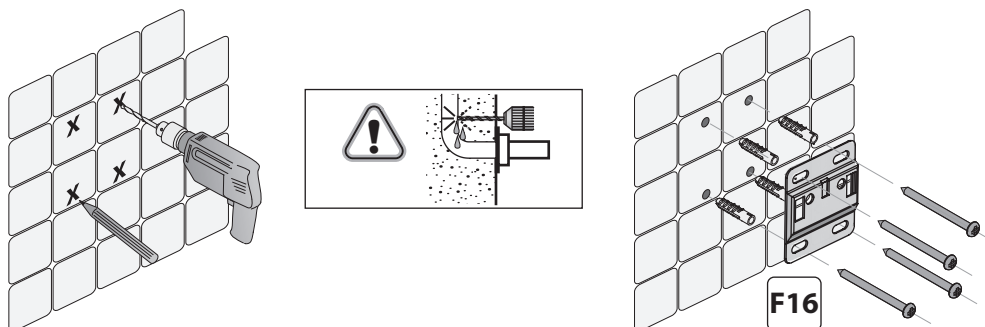
F16	Q.tà	E1	Q.tà
	2		1
	8		1
	8		

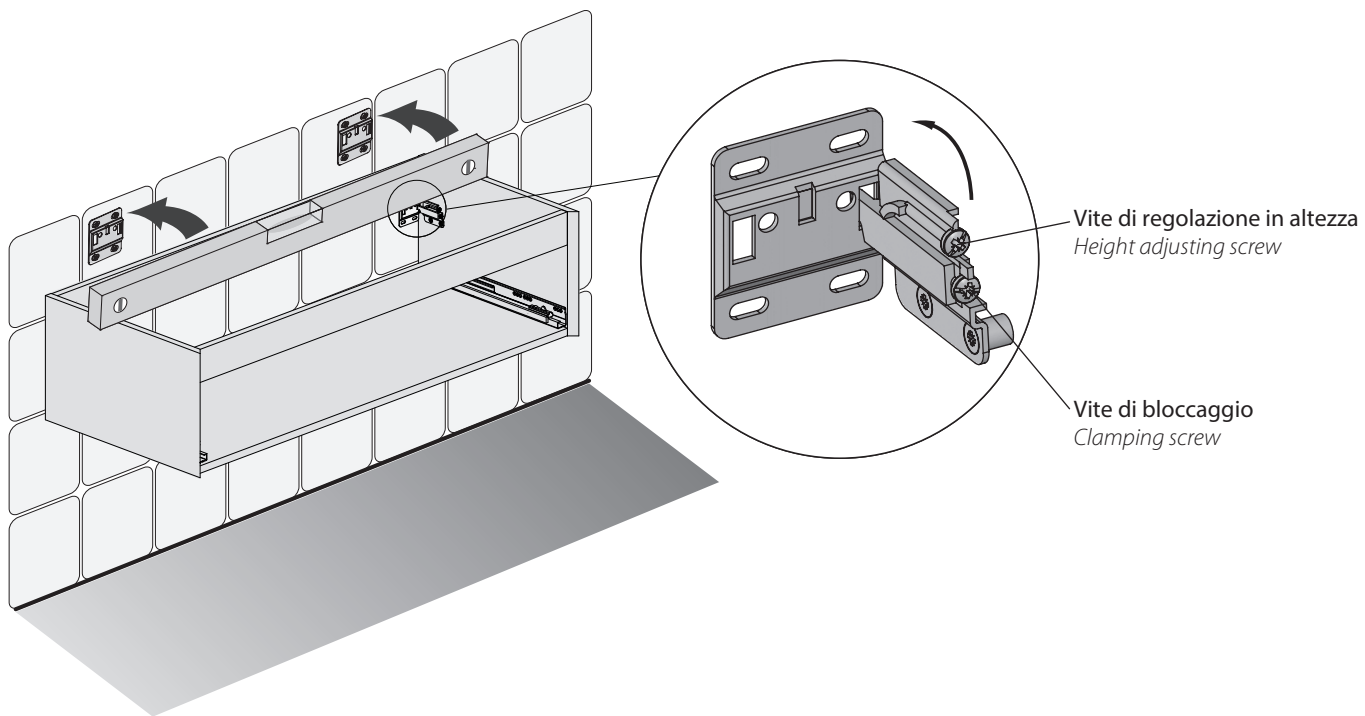
BASE LAVABO 1 Cassetto
WASHBASIN UNIT 1 Drawer

FORATURE A PARETE - WALL HOLES



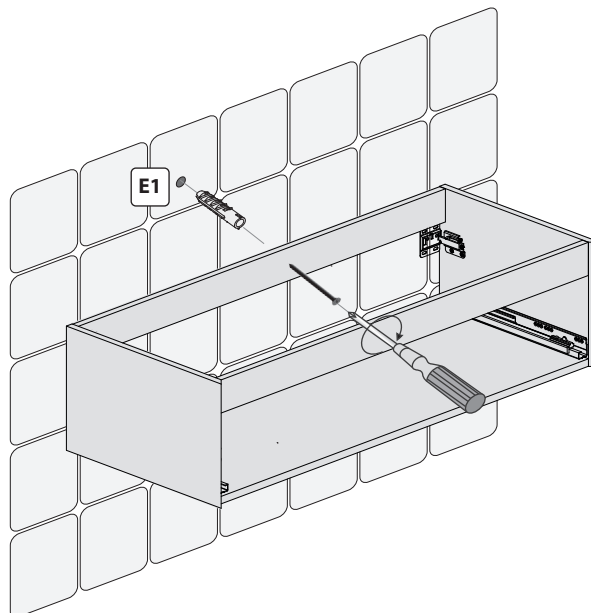
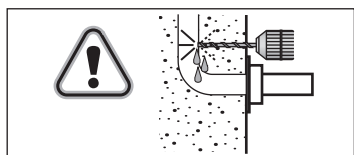
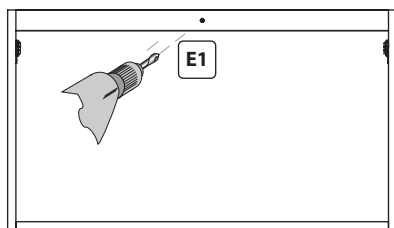
BASE LAVABO 1 Cassetto
WASHBASIN UNIT 1 Drawer



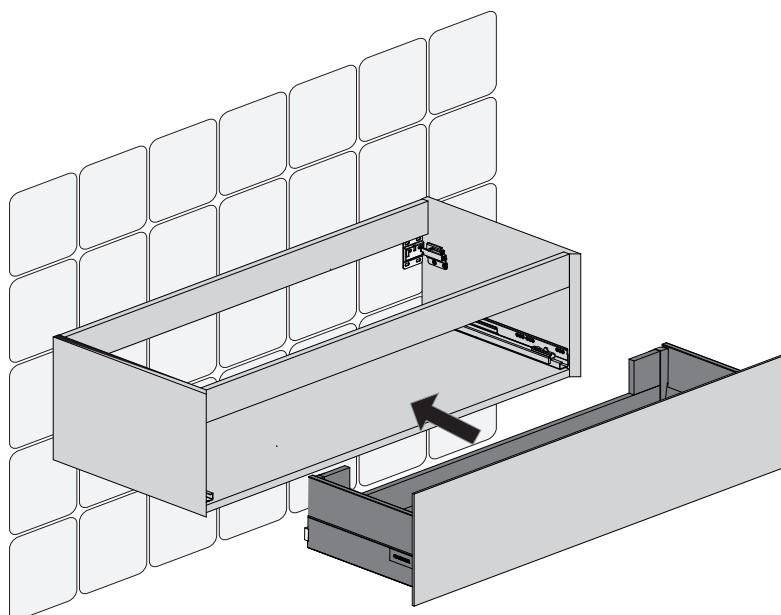


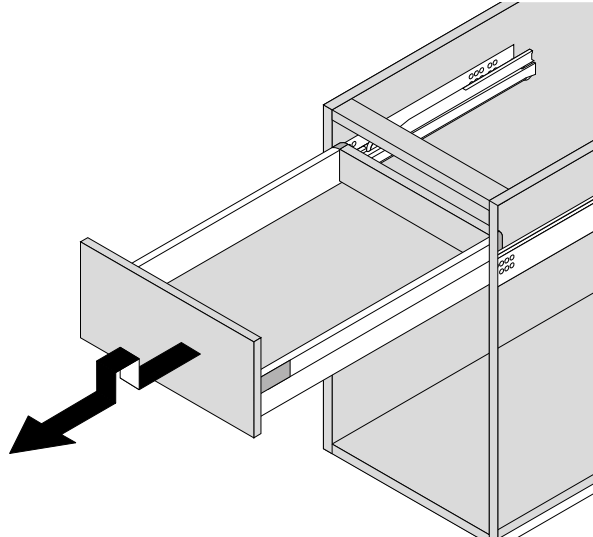
ANTISGANCIAMENTO - SAFETY SYSTEM

BASI LAVABO - Washbasin unit

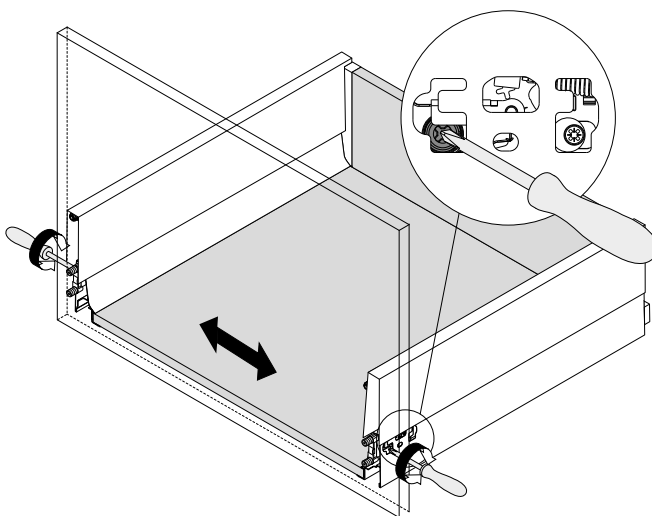


INSERIMENTO CASSETTO - DRAWER INSERTION

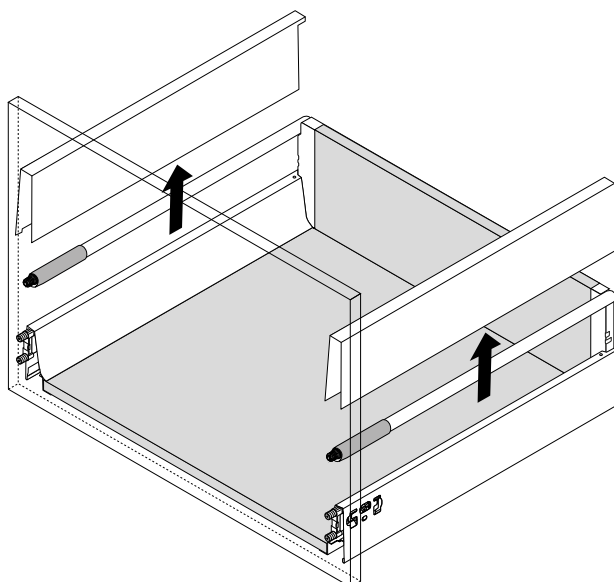




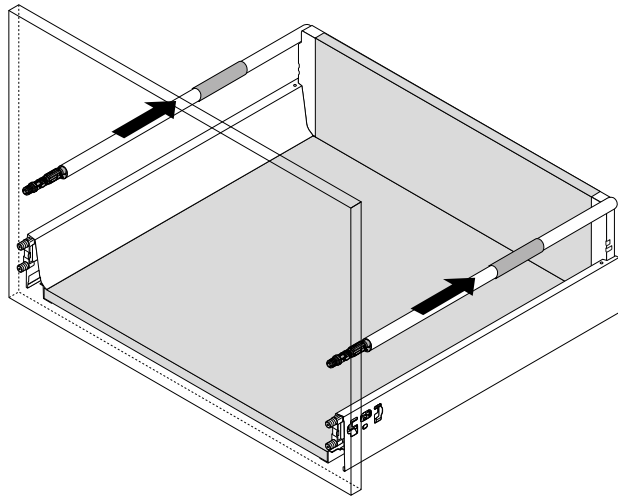
REGOLAZIONE CASSETTI TANDEMBOX ANTARO - TANDEMBOX ANTARO DRAWERS ADJUSTMENT



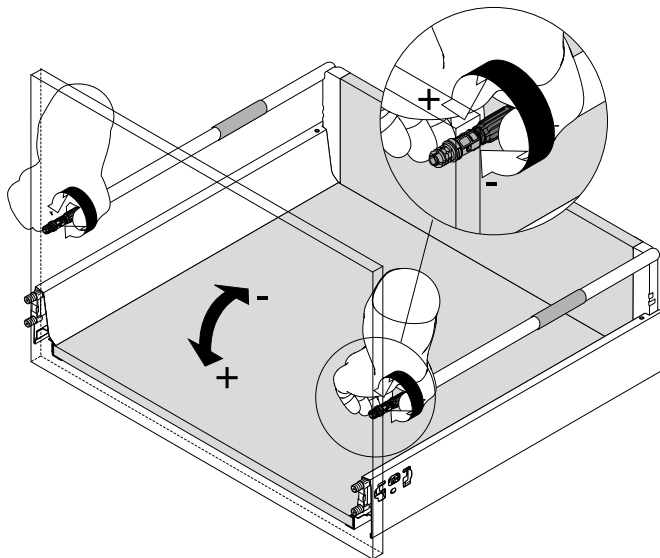
Regolazione della larghezza -
Width adjustment



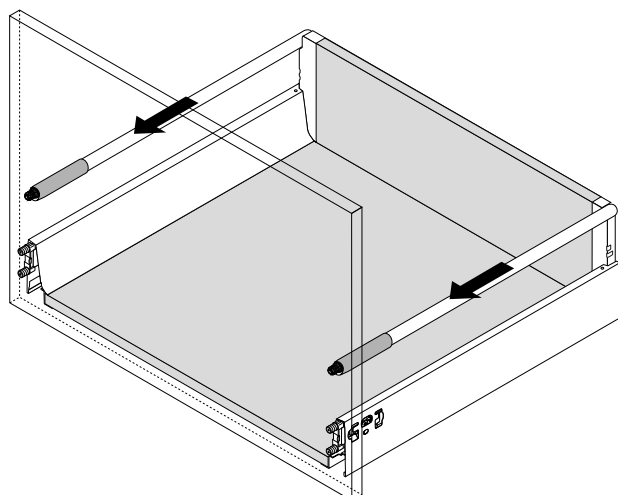
Togliere la copertura -
Cover remove



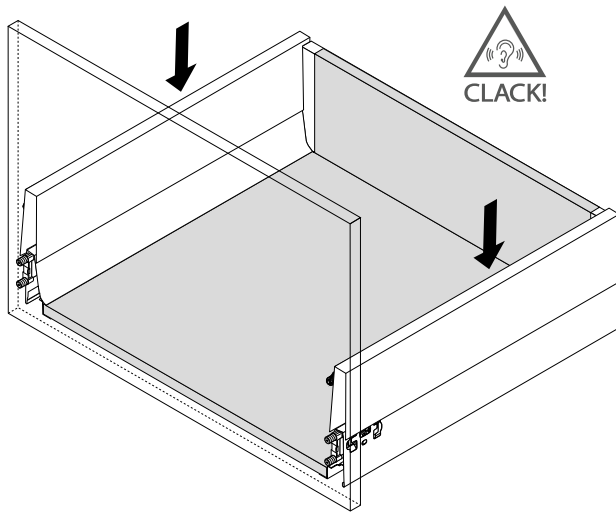
Scivolamento copertura railing
-Slipping cover railing



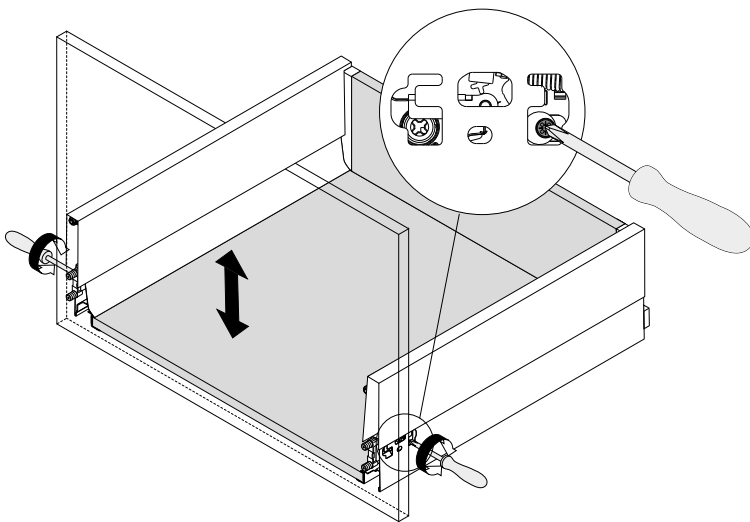
Regolazione dell'inclinazione
- Tilt adjustment



Chiusura copertura railing -
Closing the railing cover



Chiusura della copertura -
Closing the cover



Regolazione dell'altezza -
High adjustment

AGGANCIARE CASSETTI TANDEMBOX ANTARO - HOOK TANDEMBOX ANTARO DRAWERS

